

# KHSAA Basketball - Game Box Score

## Shelby County Rockets vs. Christian County Colonels

Date: 03/15/2006 Time: 8:40 pm Site: Rupp Arena-Lexington, KY Attendance: 13264

### Visitors: Christian County Colonels

##	Name	P	FG	3 Pt	FT	PTS	ORB	DRB	TR	PF	AST	TO	BS	ST	MIN
3	* Keith Tandy		6/13	0/1	7/8	19	6	6	12	4	1	2	0	4	32:00
5	* Jamaizz Baker		6/20	3/13	3/4	18	7	3	10	0	2	5	0	2	23:40
11	* Montreal Dillard		2/9	0/2	0/0	4	3	2	5	5	3	3	0	0	27:43
13	Russell Dillard		0/0	0/0	0/0	0	0	0	0	0	0	0	0	0	0:06
23	Desmond Daniel		1/1	0/0	0/0	2	0	0	0	3	0	0	0	0	5:43
25	CJ Trotter		4/10	0/3	0/0	8	4	4	8	3	1	4	1	3	22:24
31	DeCorian Romero		0/0	0/0	0/0	0	0	0	0	0	0	0	0	0	DNP
33	Shaquille Wilson		0/0	0/0	0/0	0	0	0	0	0	0	0	0	0	DNP
35	* Walter McCombs		5/18	3/12	0/0	13	2	1	3	3	1	2	0	1	27:12
45	Kortez Ivory		0/0	0/0	0/0	0	0	0	0	0	0	0	0	0	0:06
51	* Michael Warren		0/3	0/0	0/0	0	2	1	3	4	0	0	2	0	11:47
53	Antoine Ray		0/2	0/0	1/2	1	2	0	2	0	0	0	0	0	9:19
54	David Wallace		0/0	0/0	0/0	0	0	0	0	0	0	0	0	0	DNP
44	Robert Miller		0/0	0/0	0/0	0	0	0	0	0	0	0	0	0	DNP
50	Jamie King		0/0	0/0	0/0	0	0	0	0	0	0	0	0	0	DNP
	Team						3	2	5			1			
	<b>Totals</b>		<b>24/76</b>	<b>6/31</b>	<b>11/14</b>	<b>65</b>	<b>29</b>	<b>19</b>	<b>48</b>	<b>22</b>	<b>8</b>	<b>17</b>	<b>3</b>	<b>10</b>	<b>160</b>
	<b>Total FG</b>		1st Half	8/35	22.9%	2nd Half	16/41	39.0%	Game	24/76	31.6%				
	<b>3 PT FG</b>		1st Half	1/13	7.69%	2nd Half	5/18	27.8%	Game	6/31	19.4%				
	<b>Free Throws</b>		1st Half	4/6	66.7%	2nd Half	7/8	87.5%	Game	11/14	78.6%				

### Home: Shelby County Rockets

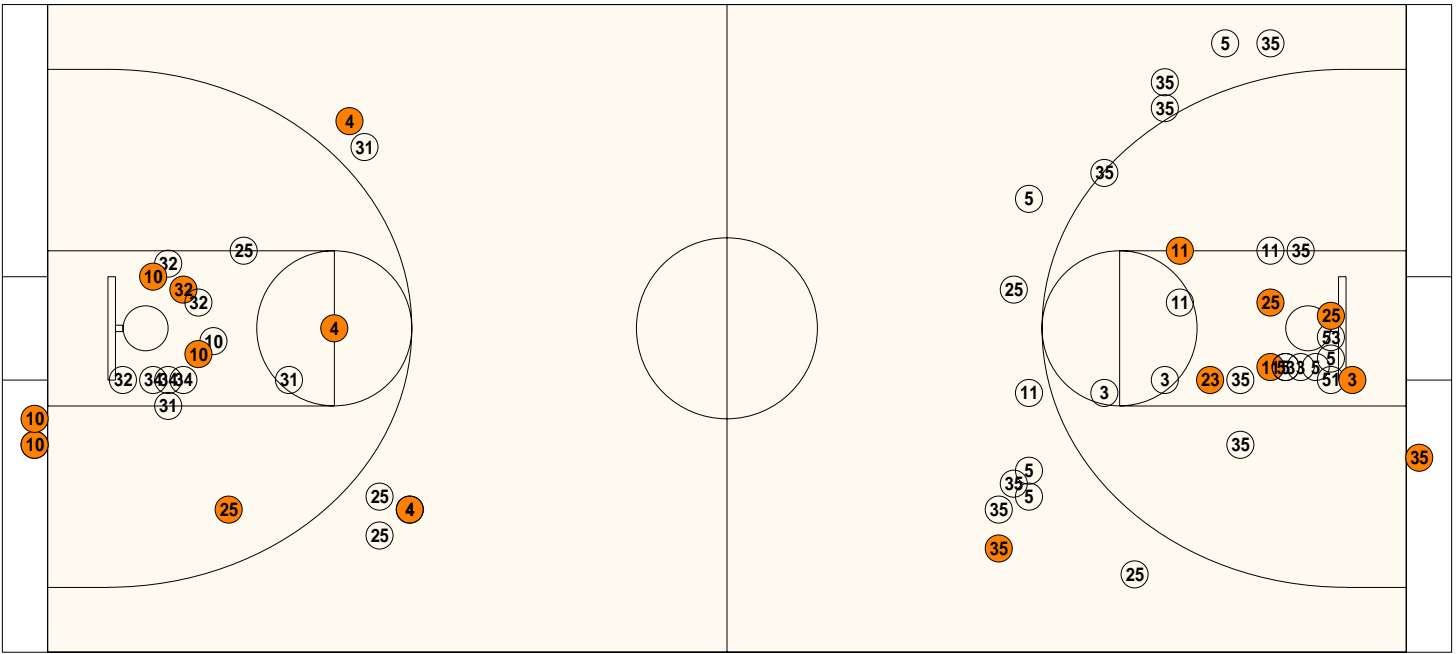
##	Name	P	FG	3 Pt	FT	PTS	ORB	DRB	TR	PF	AST	TO	BS	ST	MIN
4	* A.J. Slaughter		6/8	3/5	11/15	26	0	5	5	1	2	3	0	2	31:13
10	* Jamar White		4/5	0/0	2/7	10	0	3	3	2	8	6	0	0	25:53
12	Chris Morris		0/0	0/0	0/0	0	0	0	0	0	0	0	0	0	DNP
15	Tim Sanford		0/0	0/0	0/0	0	0	0	0	0	0	0	0	0	DNP
22	Termaine Warren		0/0	0/0	0/0	0	0	0	0	0	0	0	0	0	DNP
24	Orrie Carter		0/0	0/0	0/0	0	0	0	0	0	0	0	0	0	DNP
25	* Jeremy Cochran		3/7	1/4	1/2	8	1	4	5	1	0	4	0	0	26:25
30	Coty Minnis		0/0	0/0	0/0	0	0	0	0	0	0	0	0	0	DNP
31	Joel Cochran		3/6	0/1	1/2	7	1	0	1	1	2	3	1	0	20:39
32	* Isreal Chambers		6/10	0/0	2/3	14	1	7	8	2	0	2	0	0	26:47
33	Alex Matthews		0/0	0/0	0/0	0	0	0	0	0	0	0	0	0	DNP
34	* Emanuel Patterson		0/3	0/0	0/0	0	1	0	1	0	0	0	0	1	8:45
45	Eugene Wade		2/4	0/0	2/6	6	2	0	2	4	0	2	4	0	20:18
40	Alex Shehan		0/0	0/0	0/0	0	0	0	0	0	0	0	0	0	DNP
42	John Mark Scott		0/0	0/0	0/0	0	0	0	0	0	0	0	0	0	DNP
	Team						2	3	5						
	<b>Totals</b>		<b>24/43</b>	<b>4/10</b>	<b>19/35</b>	<b>71</b>	<b>8</b>	<b>22</b>	<b>30</b>	<b>11</b>	<b>12</b>	<b>20</b>	<b>5</b>	<b>3</b>	<b>160</b>
	<b>Total FG</b>		1st Half	10/24	41.7%	2nd Half	14/19	73.7%	Game	24/43	55.8%				
	<b>3 PT FG</b>		1st Half	2/6	33.3%	2nd Half	2/4	50.0%	Game	4/10	40.0%				
	<b>Free Throws</b>		1st Half	5/8	62.5%	2nd Half	14/27	51.9%	Game	19/35	54.3%				

	ChrCo	Shelb		ChrCo	Shelb		ChrCo	Shelb
Free Throw Pts	11	19	3Pt Points	18	12	Pts/Possession	0.92	1.01
Pts off Turnovers	20	13	2nd Chance Points	18	4	Pts off Bench	11	13
Total Rebounds	48	30	Team Rebounds	5	5	Dead Ball Reb	3	9
Off Rebound %	56.9	29.6	Def Rebound %	70.4	43.1	Total Rebound %	61.5	38.5
3Pt Efficiency	-7.3	-0.4	Def. Stops	39	39	Pts/Shot	0.78	1.18
Technical Fouls	ChrCo	Shelb	None					
	Shelb	None						
Officials	Bob Hall, Jim Hughes, Tony Gray							

	Qtr 1	Qtr 2	Qtr 3	Qtr 4	OT 1	OT 2	OT 3	OT 4	Total
Christian County Colonels	12	9	20	24	0	0	0	0	65
Shelby County Rockets	14	13	20	24	0	0	0	0	71

**Largest Lead** Shelb 54 ChrCo 43 (11 pts) **Lead Changes** 3 **Number of Ties** 2  
**Comments:** None

**FIRST HALF**



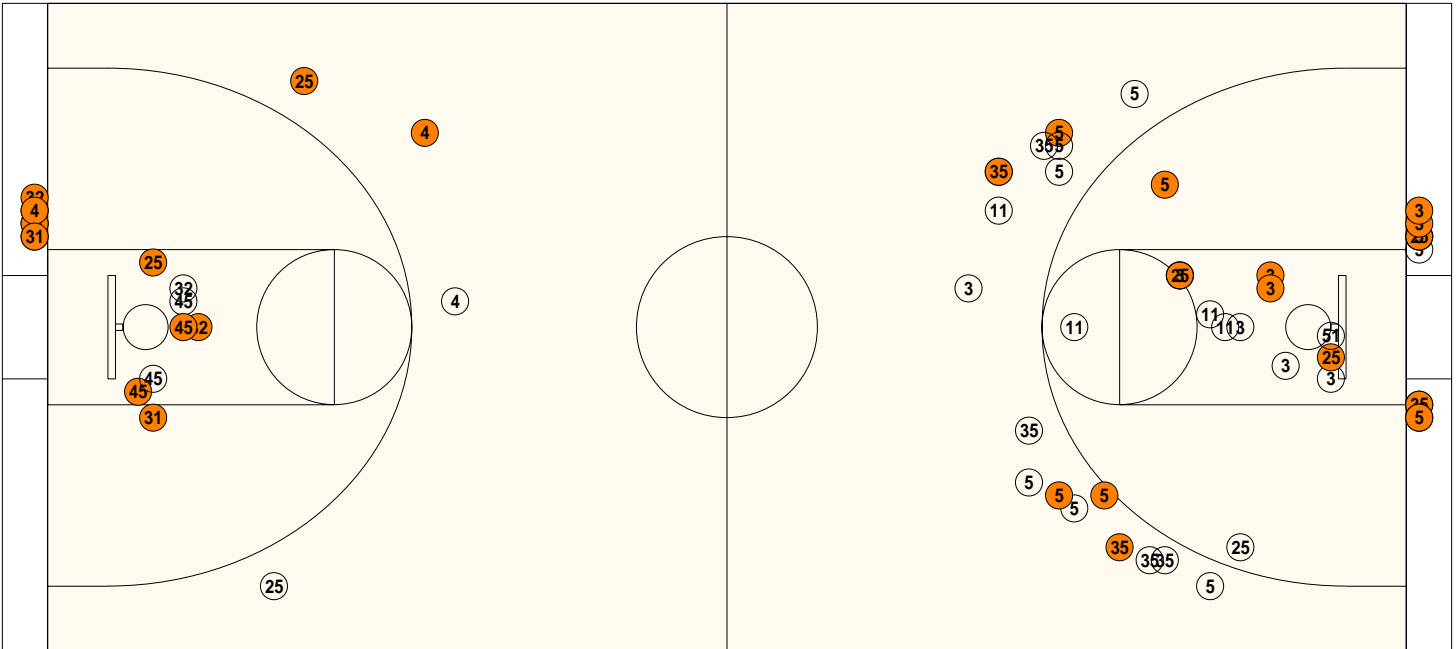
**Shelby County**

<b>Shooting</b>	<b>Pts</b>	<b>Pts</b>
2FG 8/18 (44.4%)	16	Pts/Shot 0.96
3FG 2/6 (33.3%)	6	2nd Eff Pts 2
TFG 10/24 (41.7%)		Pts off TO's 7
FT 5/8 (62.5%)	5	3Pt Eff +3.7
Scoring Distribution: 2FG 59.3% 3FG 22.2% FT 18.5%		

**Christian County**

<b>Shooting</b>	<b>Pts</b>	<b>Pts</b>
2FG 7/22 (31.8%)	14	Pts/Shot 0.55
3FG 1/13 (7.69%)	3	2nd Eff Pts 8
TFG 8/35 (22.9%)		Pts off TO's 9
FT 4/6 (66.7%)	4	3Pt Eff -13.5
Scoring Distribution: 2FG 66.7% 3FG 14.3% FT 19.0%		

**SECOND HALF**



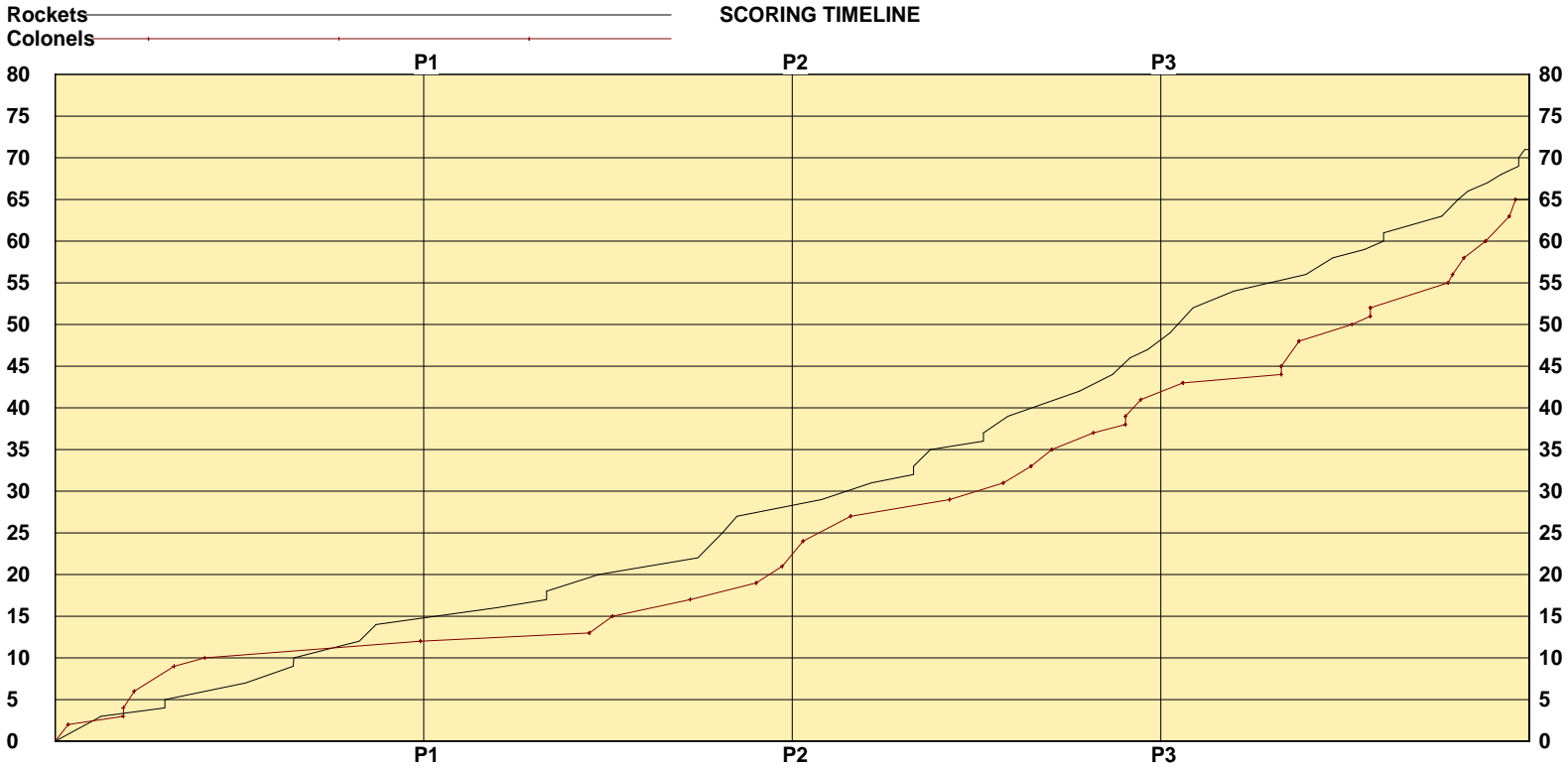
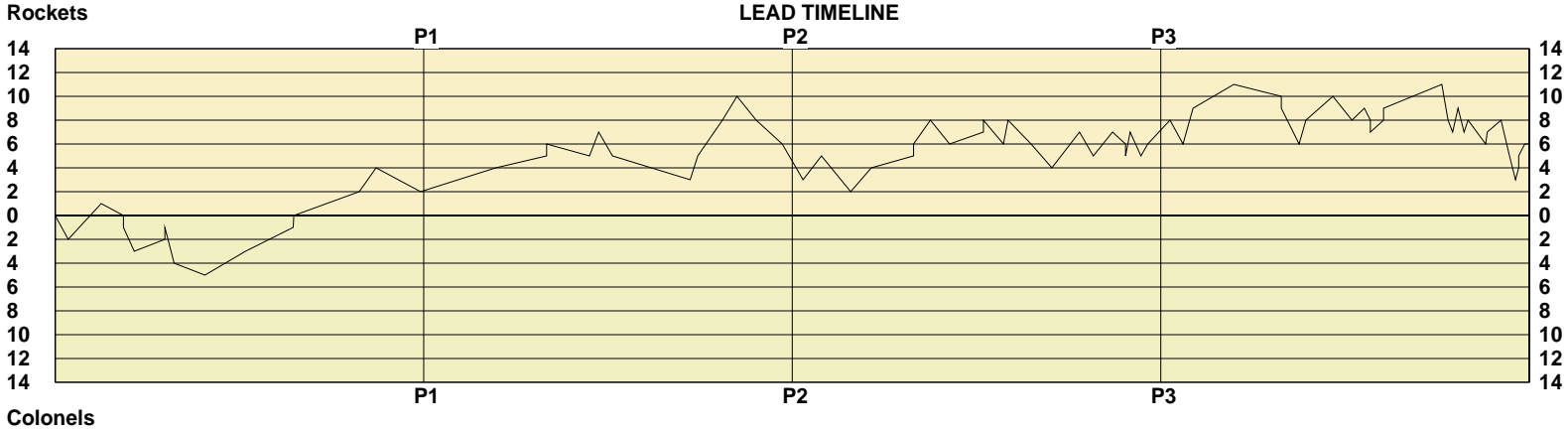
**Shelby County**

<b>Shooting</b>	<b>Pts</b>	<b>Pts</b>
2FG 12/15 (80.0%)	24s	Pts/Shot 1.38
3FG 2/4 (50.0%)	6	2nd Eff Pts 2
TFG 14/19 (73.7%)		Pts off TO's 6
FT 14/27 (51.9%)	14	3Pt Eff -3.3
Scoring Distribution: 2FG 54.5% 3FG 13.6% FT 31.8%		

**Christian County**

<b>Shooting</b>	<b>Pts</b>	<b>Pts</b>
2FG 11/23 (47.8%)	22s	Pts/Shot 0.98
3FG 5/18 (27.8%)	15	2nd Eff Pts 10
TFG 16/41 (39.0%)		Pts off TO's 11
FT 7/8 (87.5%)	7	3Pt Eff -4.1
Scoring Distribution: 2FG 50.0% 3FG 34.1% FT 15.9%		

**KHSAA Basketball - Scoring Timeline Report**  
**Shelby County Rockets vs. Christian County Colonels**  
**DATE: 03/15/2006 TIME: 8:40 pm SITE: Rupp Arena-Lexington, KY**



**Largest Lead Shelb 54 ChrCo 43 (11 pts) Lead Changes 3 Number of Ties 2**

KHSAA Basketball - Play by Play Report - Scoring Only (pg 1)

Shelby County Rockets vs. Christian County Colonels

Date: 03/15/2006 Time: 8:40 pm Site: Rupp Arena-Lexington, KY Attendance: 13264

Name	Action	Action	Score	Clock	Diff	Name	Action	Action
			0-2	1 7:43	-2 (L1)	M Dillard	FG Made	
A Slaughter	3Pt Made	J White Assist	3-2	1 7:00	+1 (L2)			
I Chambers	Personal Foul		3-3	1 6:31	(T1)	K Tandy	FT Made	
			3-4	1 6:31	-1 (L3)	K Tandy	FT Made	
			3-6	1 6:17	-3	W McCombs	Layup Made	
A Slaughter	FT Made		4-6	1 5:37	-2			
A Slaughter	FT Made		5-6	1 5:37	-1			
			5-9	1 5:25	-4	W McCombs	3Pt Made	
			5-10	1 4:45	-5	J Baker	FT Made	
I Chambers	FG Made		7-10	1 3:52	-3			
A Slaughter	Layup Made		9-10	1 2:50	-1			
A Slaughter	FT Made		10-10	1 2:49	(T2)			
J White	FG Made		12-10	1 1:24	+2 (L4)			
J White	Layup Made		14-10	1 1:02	+4			
			14-12	1 0:04	+2	M Dillard	FG Made	

End of Period Summary Rockets 14 Colonels 12

Largest Lead: Rockets 5 Colonels 10 (5 pts)

Lead in Period: Rockets 5 Colonels 10 (5 pts)

6 for 7 oppo pts

4 for 2 pts

5/13 for 38.5 %

3/3 for 100 %

Turnovers

2nd Chances

Field Goals

Free Throws

Lead Changes: 4 Ties: 2

Lead Changes: 3 Ties: 2 (this period)

7 for 5 oppo pts

8 for 3 pts

4/17 for 23.5 %

3/4 for 75.0 %

J Cochran	FG Made		16-12	2 6:26	+4			
A Slaughter	FT Made		17-12	2 5:20	+5			
A Slaughter	FT Made		18-12	2 5:20	+6			
			18-13	2 4:24	+5	A Ray	FT Made	
J White	FG Made		20-13	2 4:12	+7			
			20-15	2 3:54	+5	C Trotter	Putback Made	
			20-17	2 2:13	+3	D Daniel	FG Made	
A Slaughter	FG Made		22-17	2 2:03	+5			
A Slaughter	3Pt Made		25-17	2 1:31	+8			
J White	Layup Made		27-17	2 1:12	+10			
			27-19	2 0:47	+8	C Trotter	FG Made	
			27-21	2 0:13	+6	K Tandy	Putback Made	

End of Period Summary Rockets 27 Colonels 21

Largest Lead: Rockets 27 Colonels 17 (10 pts)

Lead in Period: Rockets 27 Colonels 17 (10 pts)

4 for 2 oppo pts

2 for 0 pts

5/11 for 45.5 %

2/5 for 40.0 %

Turnovers

2nd Chances

Field Goals

Free Throws

Lead Changes: 4 Ties: 2

Lead Changes: 0 Ties: 0 (this period)

3 for 2 oppo pts

7 for 5 pts

4/18 for 22.2 %

1/2 for 50.0 %

			27-24	3 7:46	+3	J Baker	3Pt Made	M Dillard Assist
I Chambers	Layup Made	J White Assist	29-24	3 7:22	+5			
			29-27	3 6:44	+2	J Baker	3Pt Made	M Dillard Assist
E Wade	FG Made		31-27	3 6:17	+4			
I Chambers	FT Made		32-27	3 5:22	+5	K Tandy	Personal Foul	
I Chambers	FT Made		33-27	3 5:22	+6			

**KHSAA Basketball - Play by Play Report - Scoring Only (pg 2)**  
**Shelby County Rockets vs. Christian County Colonels**  
**Date: 03/15/2006 Time: 8:40 pm Site: Rupp Arena-Lexington, KY Attendance: 13264**

Name	Action	Action	Score	Clock	Diff	Name	Action	Action
I Chambers	Layup Made	J White Assist	35-27	3	5:00 +8			
			35-29	3	4:35 +6	K Tandy	FG Made	W McCombs Assist
E Wade	FT Made		36-29	3	3:51 +7			
E Wade	FT Made		37-29	3	3:51 +8			
			37-31	3	3:25 +6	W McCombs	Layup Made	
I Chambers	Layup Made	J Cochran Assist	39-31	3	3:19 +8			
			39-33	3	2:49 +6	J Baker	Layup Made	C Trotter Assist
			39-35	3	2:22 +4	C Trotter	Putback Made	
J Cochran	3Pt Made	J Cochran Assist	42-35	3	1:46 +7			
			42-37	3	1:28 +5	J Baker	FG Made	
I Chambers	Layup Made	A Slaughter Assist	44-37	3	1:03 +7			
E Wade	Personal Foul		44-38	3	0:46 +6	J Baker	FT Made	
			44-39	3	0:46 +5	J Baker	FT Made	
J Cochran	Layup Made	J White Assist	46-39	3	0:40 +7			
			46-41	3	0:26 +5	K Tandy	Layup Made	
J White	FT Made		47-41	3	0:17 +6			

**End of Period Summary Rockets 47 Colonels 41**

**Largest Lead: Rockets 27 Colonels 17 (10 pts)**

**Lead in Period: Rockets 35 Colonels 27 (8 pts)**

**7 for 8 oppo pts**

**0 for 0 pts**

**7/7 for 100 %**

**5/9 for 55.6 %**

**Turnovers**

**2nd Chances**

**Field Goals**

**Free Throws**

**Lead Changes: 4 Ties: 2**

**Lead Changes: 0 Ties: 0 (this period)**

**3 for 2 oppo pts**

**3 for 4 pts**

**8/18 for 44.4 %**

**2/2 for 100 %**

J Cochran	FG Made	J White Assist	49-41	4	7:48 +8			
			49-43	4	7:31 +6	K Tandy	FG Made	J Baker Assist
A Slaughter	3Pt Made	J White Assist	52-43	4	7:18 +9			
A Slaughter	Layup Made	J White Assist	54-43	4	6:25 +11			
J Cochran	Personal Foul		54-44	4	5:23 +10	K Tandy	FT Made	
			54-45	4	5:23 +9	K Tandy	FT Made	
			54-48	4	5:00 +6	J Baker	3Pt Made	
J Cochran	Layup Made	A Slaughter Assist	56-48	4	4:51 +8			
J Cochran	FG Made	J White Assist	58-48	4	4:16 +10			
			58-50	4	3:51 +8	C Trotter	Layup Made	K Tandy Assist
A Slaughter	FT Made		59-50	4	3:35 +9	C Trotter	Personal Foul	
I Chambers	Personal Foul		59-51	4	3:27 +8	K Tandy	FT Made	
			59-52	4	3:27 +7	K Tandy	FT Made	
A Slaughter	FT Made		60-52	4	3:10 +8	M Warren	Personal Foul	
A Slaughter	FT Made		61-52	4	3:10 +9			
I Chambers	FG Made		63-52	4	1:54 +11			
			63-55	4	1:46 +8	W McCombs	3Pt Made	M Dillard Assist
			63-56	4	1:40 +7	K Tandy	FT Made	
E Wade	FG Made		65-56	4	1:33 +9			
			65-58	4	1:25 +7	J Baker	Layup Made	
J Cochran	FT Made		66-58	4	1:20 +8			
			66-60	4	0:57 +6	K Tandy	Layup Made	
J Cochran	FT Made		67-60	4	0:55 +7			
J White	FT Made		68-60	4	0:37 +8			
			68-63	4	0:26 +5	W McCombs	3Pt Made	J Baker Assist
			68-65	4	0:18 +3	K Tandy	FG Made	
A Slaughter	FT Made		69-65	4	0:14 +4	W McCombs	Personal Foul	

**OFFICIAL BASKETBALL BOX SCORE**  
Christian County Colonels vs Shelby County Rockets

03/15/2006 8:40 pm  
Final Box Score

Rupp Arena  
Lexington, KY

No.	Christian County Colonels	Total FG		3-point		Free throw		Rebounds			F	TP	A	TO	BLK	STL	MIN
		FG	FGA	FG	FGA	FT	FTA	Off	Def	Tot							
3	Keith Tandy	6	13	0	1	7	8	6	6	12	4	19	1	2	0	4	32:00
5	Jamaizz Baker	6	20	3	13	3	4	7	3	10	0	18	2	5	0	2	23:40
11	Montreal Dillard	2	9	0	2	0	0	3	2	5	5	4	3	3	0	0	27:43
13	Russell Dillard	0	0	0	0	0	0	0	0	0	0	0	0	0	0	0	0:06
23	Desmond Daniel	1	1	0	0	0	0	0	0	0	3	2	0	0	0	0	5:43
35	Walter McCombs	5	18	3	12	0	0	2	1	3	3	13	1	2	0	1	27:12
25	CJ Trotter	4	10	0	3	0	0	4	4	8	3	8	1	4	1	3	22:24
51	Michael Warren	0	3	0	0	0	0	2	1	3	4	0	0	0	2	0	11:47
53	Antoine Ray	0	2	0	0	1	2	2	0	2	0	1	0	0	0	0	9:19
45	Kortez Ivory	0	0	0	0	0	0	0	0	0	0	0	0	0	0	0	0:06
31	DeCorian Romero	0	0	0	0	0	0	0	0	0	0	0	0	0	0	0	DNP
33	Shaquille Wilson	0	0	0	0	0	0	0	0	0	0	0	0	0	0	0	DNP
54	David Wallace	0	0	0	0	0	0	0	0	0	0	0	0	0	0	0	DNP
44	Robert Miller	0	0	0	0	0	0	0	0	0	0	0	0	0	0	0	DNP
50	Jamie King	0	0	0	0	0	0	0	0	0	0	0	0	0	0	0	DNP
<b>Team (Included in Totals)</b>								<b>3</b>	<b>2</b>	<b>5</b>					<b>1</b>		
<b>Totals</b>		<b>24</b>	<b>76</b>	<b>6</b>	<b>31</b>	<b>11</b>	<b>14</b>	<b>29</b>	<b>19</b>	<b>48</b>	<b>22</b>	<b>65</b>	<b>8</b>	<b>17</b>	<b>3</b>	<b>10</b>	<b>160</b>
Total FG%:1st half 8 - 35 (22.9%) 2nd half 16 - 41 (39.0%) Game 24 - 76 (31.6%)												Deadball					
3Pt FG%: 1st half 1 - 13 (7.69%) 2nd half 5 - 18 (27.8%) Game 6 - 31 (19.4%)												rebounds					
FT%: 1st half 4 - 6 (66.7%) 2nd half 7 - 8 (87.5%) Game 11 - 14 (78.6%)												3					
No.	Shelby County Rockets	Total FG		3-point		Free throw		Rebounds			F	TP	A	TO	BLK	STL	MIN
		FG	FGA	FG	FGA	FT	FTA	Off	Def	Tot							
4	A.J. Slaughter	6	8	3	5	11	15	0	5	5	1	26	2	3	0	2	31:13
10	Jamar White	4	5	0	0	2	7	0	3	3	2	10	8	6	0	0	25:53
12	Chris Morris	0	0	0	0	0	0	0	0	0	0	0	0	0	0	0	DNP
15	Tim Sanford	0	0	0	0	0	0	0	0	0	0	0	0	0	0	0	DNP
22	Termaine Warren	0	0	0	0	0	0	0	0	0	0	0	0	0	0	0	DNP
32	Isreal Chambers	6	10	0	0	2	3	1	7	8	2	14	0	2	0	0	26:47
25	Jeremy Cochran	3	7	1	4	1	2	1	4	5	1	8	0	4	0	0	26:25
31	Joel Cochran	3	6	0	1	1	2	1	0	1	1	7	2	3	1	0	20:39
45	Eugene Wade	2	4	0	0	2	6	2	0	2	4	6	0	2	4	0	20:18
34	Emanuel Patterson	0	3	0	0	0	0	1	0	1	0	0	0	0	0	1	8:45
24	Orrie Carter	0	0	0	0	0	0	0	0	0	0	0	0	0	0	0	DNP
30	Coty Minnis	0	0	0	0	0	0	0	0	0	0	0	0	0	0	0	DNP
33	Alex Matthews	0	0	0	0	0	0	0	0	0	0	0	0	0	0	0	DNP
40	Alex Shehan	0	0	0	0	0	0	0	0	0	0	0	0	0	0	0	DNP
42	John Mark Scott	0	0	0	0	0	0	0	0	0	0	0	0	0	0	0	DNP
<b>Team (Included in Totals)</b>								<b>2</b>	<b>3</b>	<b>5</b>					<b>0</b>		
<b>Totals</b>		<b>24</b>	<b>43</b>	<b>4</b>	<b>10</b>	<b>19</b>	<b>35</b>	<b>8</b>	<b>22</b>	<b>30</b>	<b>11</b>	<b>71</b>	<b>12</b>	<b>20</b>	<b>5</b>	<b>3</b>	<b>160</b>
Total FG%:1st half 10 - 24 (41.7%) 2nd half 14 - 19 (73.7%) Game 24 - 43 (55.8%)												Deadball					
3Pt FG%: 1st half 2 - 6 (33.3%) 2nd half 2 - 4 (50.0%) Game 4 - 10 (40.0%)												rebounds					
FT%: 1st half 5 - 8 (62.5%) 2nd half 14 - 27 (51.9%) Game 19 - 35 (54.3%)												9					

Technical Fouls: None

Attendance: 13264

Officials: Bob Hall, Jim Hughes, Tony Gray

Score by Period					Record	Overall	Conf
1st	2nd	3rd	4th	Final			
Christian County Colonels	12	9	20	24	65	Colonels	
Shelby County Rockets	14	13	20	24	71	Rockets	

Rockets Colonels		Rockets Colonels		Rockets Colonels	
Points off Turnovers	13 20	Second Effort Points	4 18	Bench Points	13 11
Points in the Paint	30 30	3 Point Points	12 18	Free Throw Points	19 11
3pt Efficiency	-0.4 -7.3	Points/Shot	1.18 0.78	Defensive Stops	39 39
Largest Lead	54 43 (11 pts)	Lead Changes	3	Number of Ties	2

Game comments: None